

**PURCHASING**

**RESPONSIBLE**

**Training**

2025

Our Commitment



What is it?



What are we looking for?



Audit pillars



What is our scope?





At El Puerto de Liverpool we seek to strengthen our supply chain to generate a positive social impact, improving working conditions, promoting continuous improvement and protecting the environment.



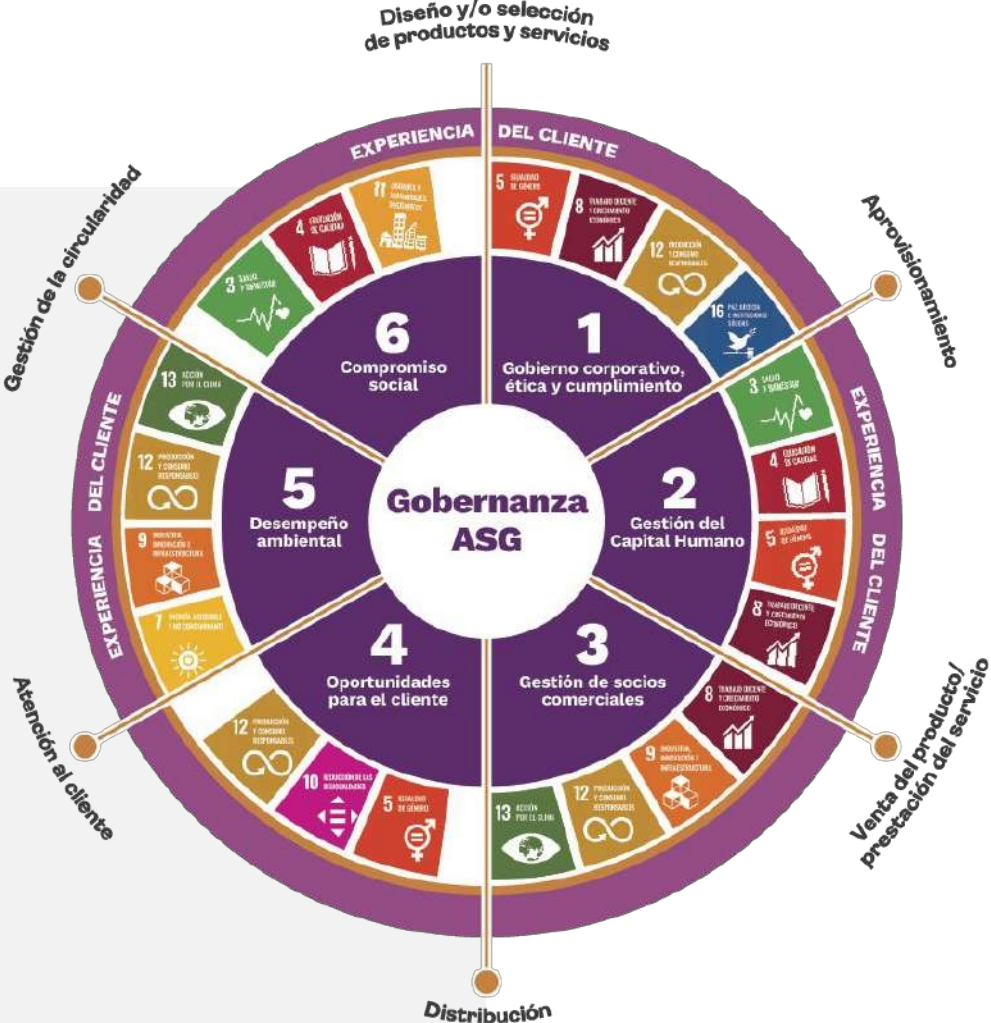
The **Responsible Purchasing** Program is part of La Huella de El Puerto.

The initiative seeks to ensure that we, suppliers and partners, operate responsibly in the production chain.

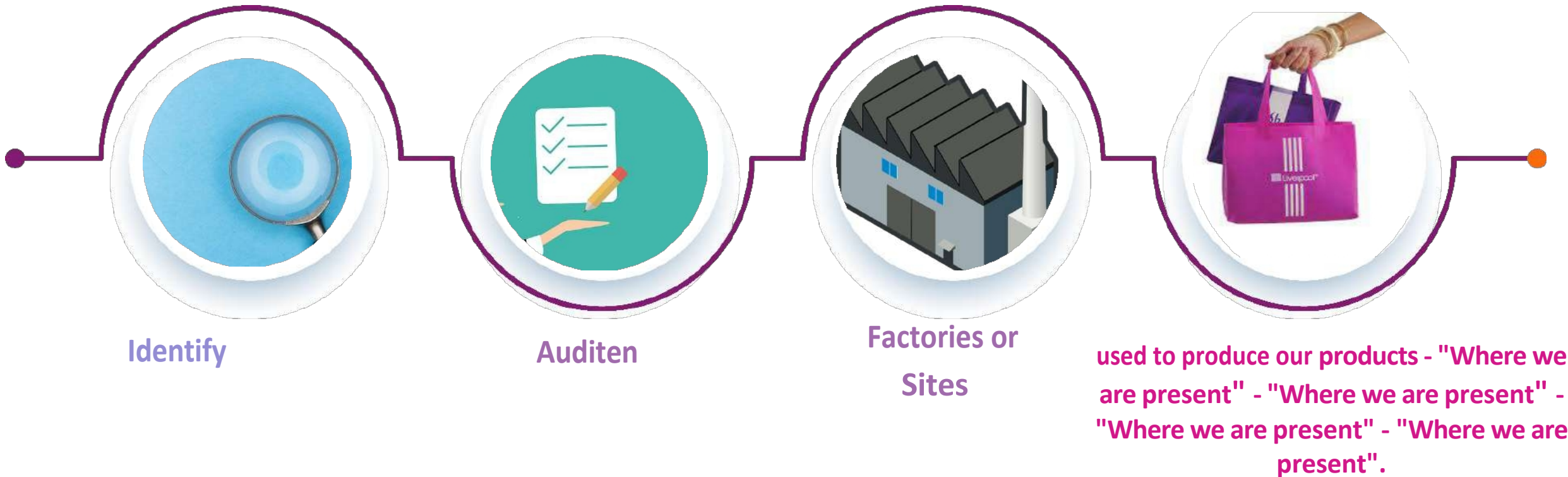
Guaranteeing



Minimum legal requirements



Que our strategic and own-brand suppliers, national and international, to identify, audit and share the factories where they produce our products.





### Employment is freely chosen

No forced, involuntary labor, required deposits, withholding of documents or any other form of retention at work



### Prohibition of child labor

If youth labor is allowed in the country, to minimize it and to promote education



### Occupational health and safety

Working conditions for the prevention of risks and accidents



### Environmental protection

Verification of compliance of environmental regulations for water, waste, emissions and energy



### Living Wage

Minimum wages adequate. Prohibition of disciplinary deductions affecting the employee's quality of life



### Not excessive working hours

Days off and overtime in accordance with legislation



### Non-discrimination

In hiring, compensation, training, development, retirement or other processes.



### Regular work

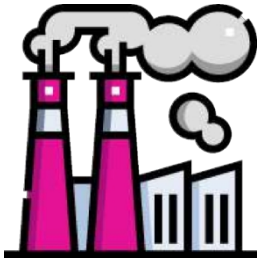
Recognition of the labor relationship between the supplier and its collaborators. Includes subcontracting



### "No" inhumane or harsh treatment

Prohibition of physical, verbal or disciplinary abuse, as well as sexual or any other type of harassment.





Supplier factories that **manufacture merchandise under one of the following criteria:**

## PHASE I

→ Proprietary Brands

## PHASE II

→ Strategic Brands (Exclusive)  
(Only or main point of sale is the Port of Liverpool)

→ Use of License or Trademark



## CATMex

1. Supplier requests factory registration from CATMEX team
2. CATMex approves or rejects.
  - a. If approved, the vote is sent to CR.
3. CR requests audit report
4. CR checks, validates, if everything is OK issues FID
5. The supplier can use the factory

## Direct Purchase

1. Supplier requests the factory's registration to the Commercial team
2. The supplier should indicate type of product, approximate units, season, brand, etc.
3. The commercial area Approves/Rejects, if approved, the VoBo is sent to CR
4. CR requests audit report
5. CR reviews, validates and, if applicable, issues the FID
6. The supplier can use the factory

**The FID is a unique and non-transferable number** that is assigned to a factory for its identification and will be active in the system that corresponds to it. In the event that a supplier does not renew the factory audit, it is inactivated.





**PROCESS**



The **Provider** is responsible for the transparency of 100% of the factories where the supplier are manufacture our own brands are manufactured

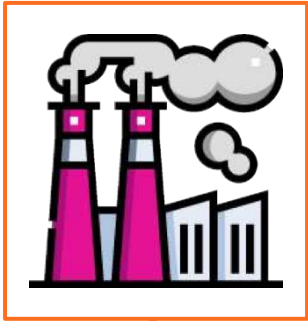
What is a Fibrica?

Location physical where is is carried out the transformation of a product

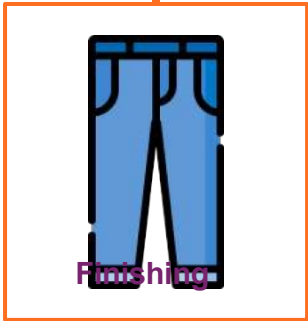
- Finished Product Warehouse
- Cutting, Stamping, Screen Printing and/or Embroidery
- Inputs
- Manufacturing and Assembly

And, any physical location that touches our brand\*.

Confection



Example:Denim Pants Supplier



Finishing



Scope of sites or fibers to be audited





### NOTES:

- The Port of Liverpool does not audit; the factory contacts one of the auditing protocols and firms to perform this activity, the audits are internationally recognized.
- Planning and follow-up are the responsibility of the supplier
- The average audit cycle time **ranges from one to three months.**










**Audit Process - EPL Accompaniment**





Protocol	Program	Type of audit	Scope of the protocol	Web
	Sedex Members Ethical Trade Audit	Continuous improvement program	All types of industry and all regions of the world	<a href="https://www.sedex.com/es/">https://www.sedex.com/es/</a>
	BSCI (Business Social Compliance Initiative)	Certification (Self-assessment)	All types of industry mainly located in Asia	<a href="https://www.amfori.org/en/solutions/social/about-bsci">https://www.amfori.org/en/solutions/social/about-bsci</a>
	WRAP (Worldwide Responsible Accredited Production)	Certification (Self-assessment)	All types of industry mainly located in Asia	<a href="https://wrapcompliance.org/es/#">https://wrapcompliance.org/es/#</a>
	ICTI - Ethical Supply Chain Program	Certification (Self-assessment)	Suppliers of Toy Specifics, mainly located in Asia.	<a href="https://ethicaltoyprogram.org/en/our-program/certification-and-audit/">https://ethicaltoyprogram.org/en/our-program/certification-and-audit/</a>
	RJC - Responsible Jewellery Council	Certification (Self-assessment)	Específicos para joyería Suppliers, mainly located in Asia and Europe.	<a href="https://responsiblejewellery.com">https://responsiblejewellery.com</a>





## Possible results of audits presented to the Port of Liverpool

**RED**

### In Default

- The supplier has **30 days** to submit its corrective action plan (CAP), otherwise the factory is inactivated.
- The evaluation is retained for one year.
- Purchase orders can be placed upon delivery of the PAC.

**YELLOW**

### Solid Performance

- Validity **1 Year**
- Findings that do not affect the integrity of the workers.

**GR**

### Outstanding Performance

- Validity **2 Years**.
- No findings (or maximum 6 minor findings closed in a timely manner).
- Semi-announced audit (4-week audit window).



### The Port of Liverpool

- Traceability and risk mitigation in the supply chain
- Long-term relationships with suppliers
- Being prepared for new legal challenges
- Fair treatment of suppliers and equal opportunity

### Suppliers:

- Management systems training
- Self-presentation of STPS NOM's (regulatory)\*.
- Knowledge of legal fiscal compliance by factories\*.

### Systems:

- Compliance with the United Nations SDGs
- Managing long-term internal and external compliance programs

\*do-it-yourself





### Training 2024

- **+400 suppliers** trained
- **Recurrent training** to commercial areas (annualized)
- **+50 suppliers** with follow-up on corrective action plans



**Being Ambassadors of the program:** Conveying the program's reach to our business partners.

### Scope of the program:

- Focused on work centers - No Corporate name
- Focused on improving workers' quality of life
- Qthat suppliers comply with the minimum legal requirements, at production sites
- Fair opportunities for all suppliers

### Qué is not:

- A costly expense for factories
- A punitive program, to remove a supplier
- A disincentive not to purchase or negotiate orders from a supplier



Why Qué do we do it?

Because it is the right thing to do